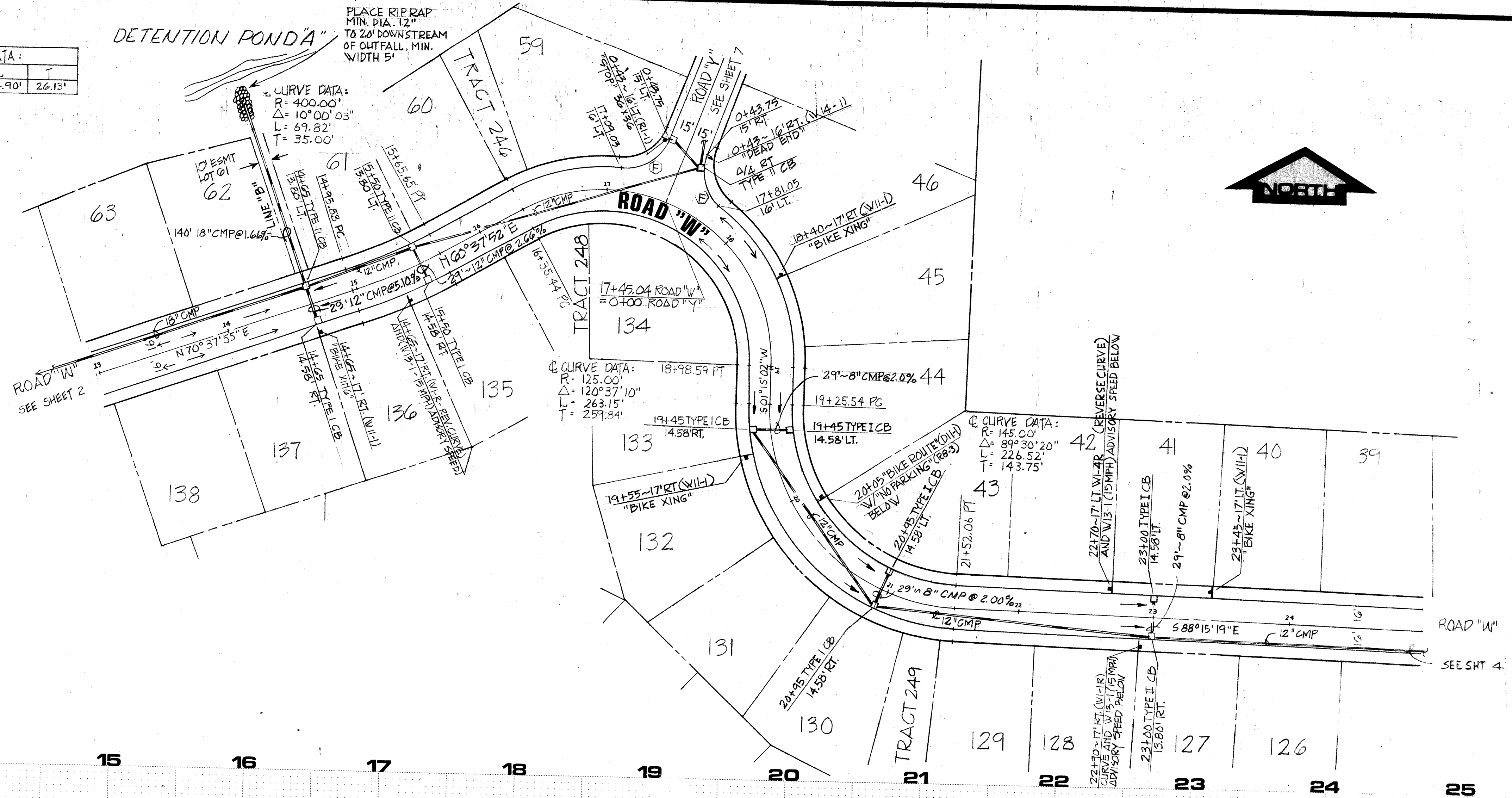


CURB RETURN DATA:				
R	Δ	L	T	
35'	73° 29' 44"	44.90'	26.13'	

DETENTION POND "A"

PLACE RIP RAP
MIN. DIA. 12"
TO 20' DOWNSTREAM
OF CUTFALL, MIN.
WIDTH 5'



approval
FOR CONSTRUCTION:

Harold E. Weed
Harold E. Weed, P.E.
ENGINEER
SNOHOMISH COUNTY

W & H WILSEY & HAM, INC.
ENGINEERING • PLANNING • SURVEYING
• ENVIRONMENTAL ANALYSIS

631 Strander Boulevard
Tukwila, Washington 98188
Telephone
(206) 246-2470

ROAD "W"
sta. 13+00.37 to 24+97.75

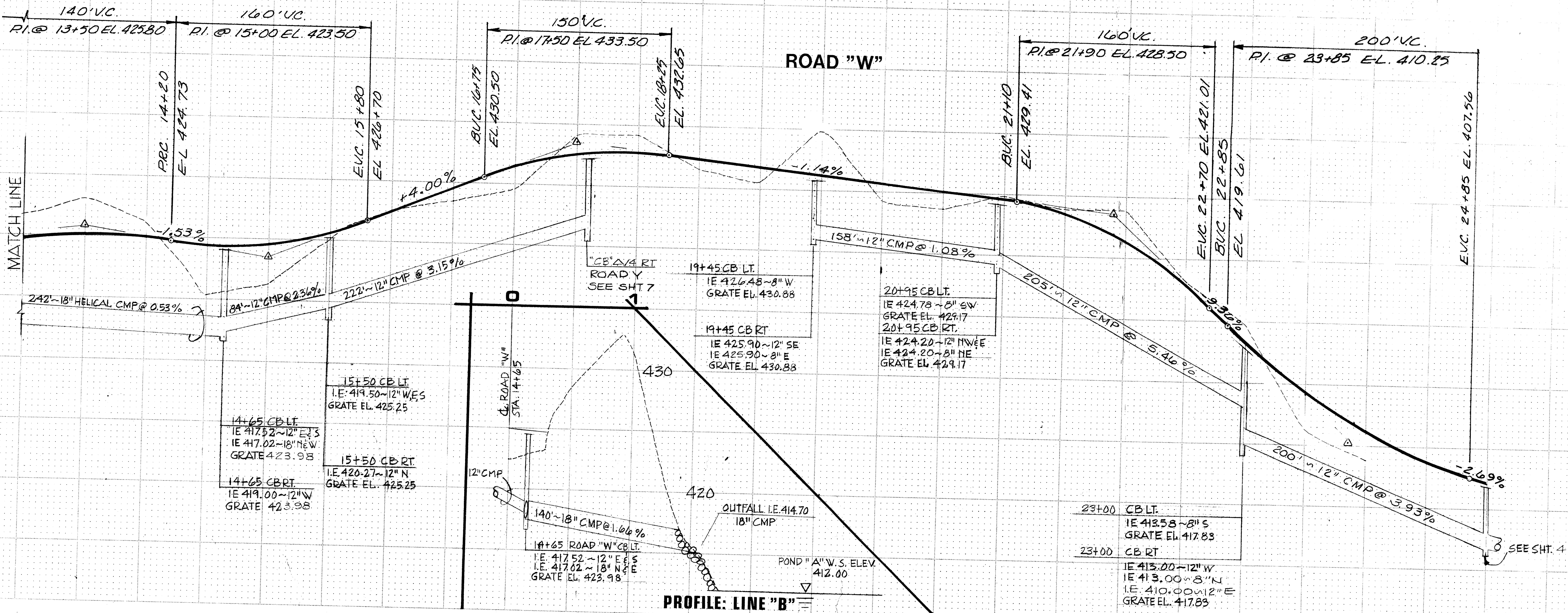


Revisions

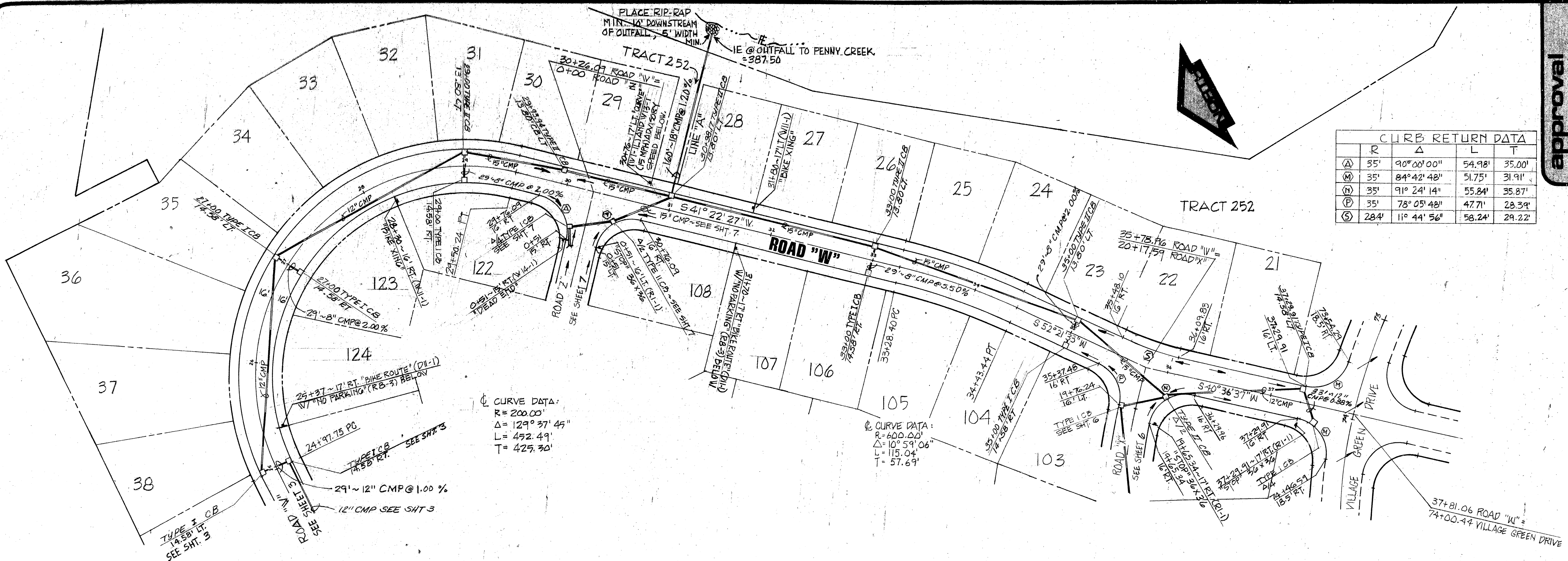
By	Date

Date: 10-77
Scale: 1"=50' H/1"=5' V
Designed: LEW/DHE
Drawn: RLL/SRM
Checked: DHE
Approved: _____

Dwg. Number: 3.2090.4001.21.01
SHEET
3 of **9**



HUCKLEBERRY



CURB RETURN DATA				
	R	Δ	L	T
(A)	35'	90°00'00"	54.98'	35.00'
(B)	35'	84°42'48"	51.75'	31.91'
(C)	35'	91°24'14"	55.84'	35.87'
(D)	35'	78°05'48"	47.71'	28.39'
(E)	284'	11°44'56"	58.24'	29.22'

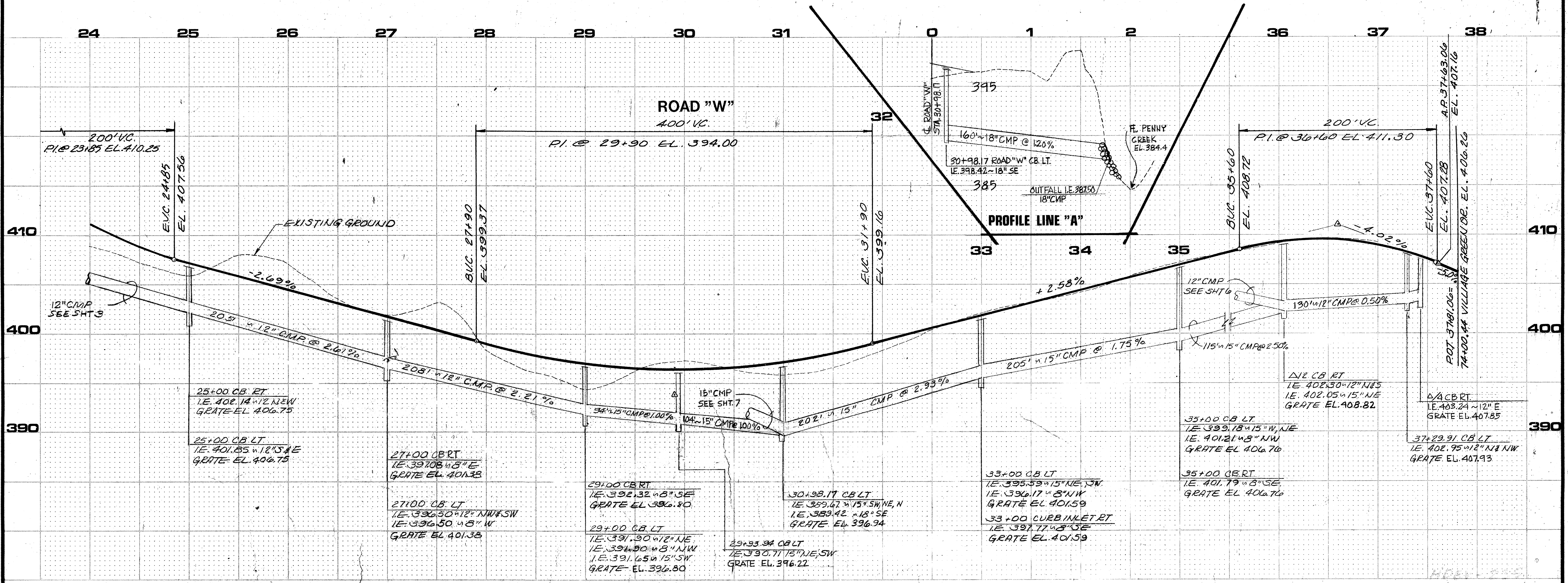
approval
FOR CONSTRUCTION:

David E. Wood
David E. Wood, P.E.
SNOHOMISH COUNTY
ENGINEER

W & H WILSEY & HAM, INC.
ENGINEERING • PLANNING • SURVEYING
• ENVIRONMENTAL ANALYSIS •

681 Strander Boulevard
Tukwila, Washington 98188

Telephone
(206) 248-2170



By: _____ Date: _____

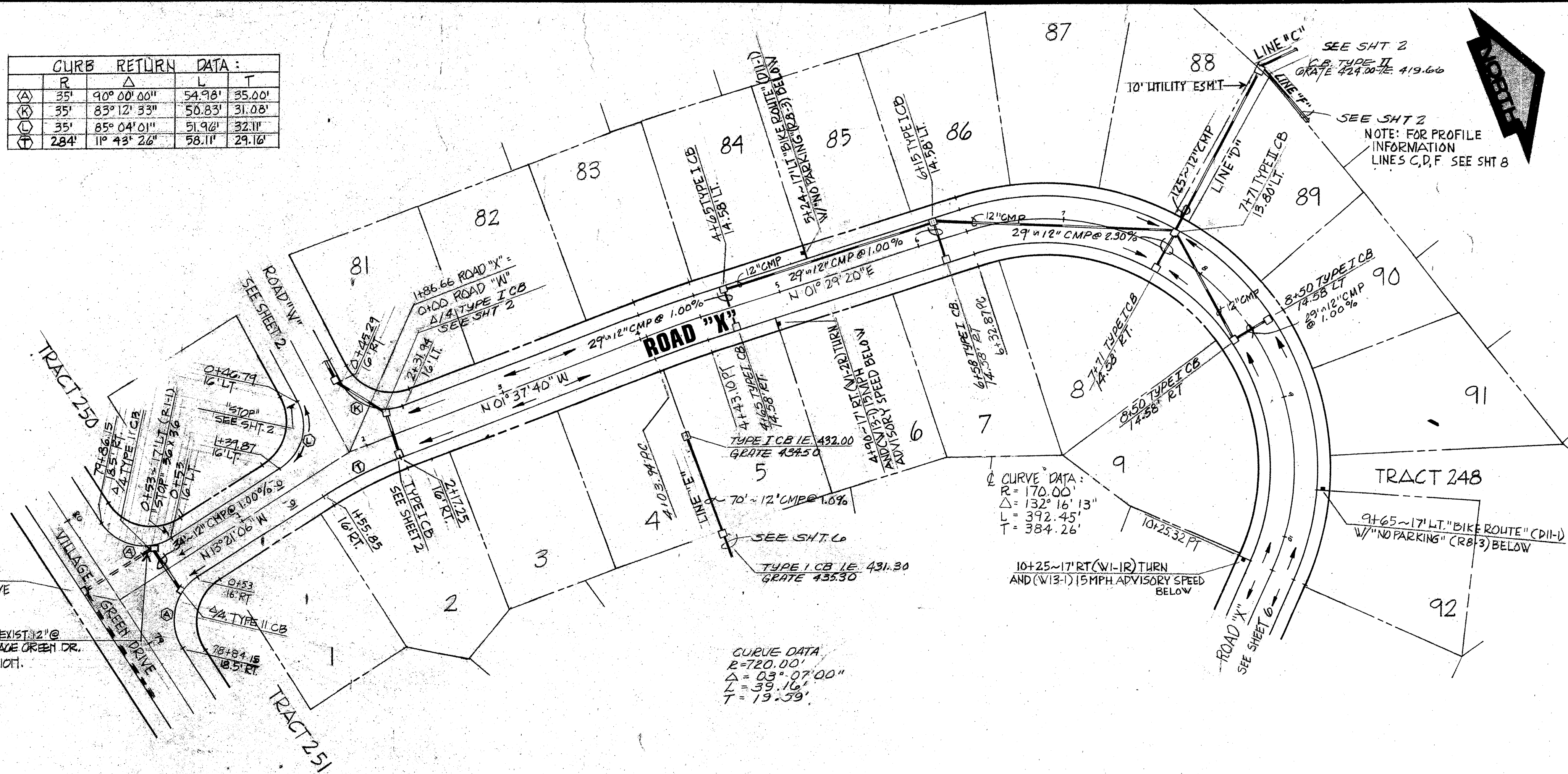
Revisions:

Date: 10-77
Scale: 1"=50' H/1"=5' V
Designed: LEW/DHB
Drawn: RL/SRM
Checked: DHB
Approved: _____

Dwg. Number: 3-2090-4001-21DI
SHEET: 4 of 9

HUCKLEBERRY

CURB RETURN DATA:				
R	Δ	L	T	
35'	90° 00' 00"	54.98'	35.00'	
35'	85° 12' 33"	50.83'	31.08'	
35'	85° 04' 01"	51.96'	32.11'	
284'	11° 43' 26"	58.11'	29.16'	



0+00 ROAD "X" =
79+35.15 VILLAGE GREEN DRIVE

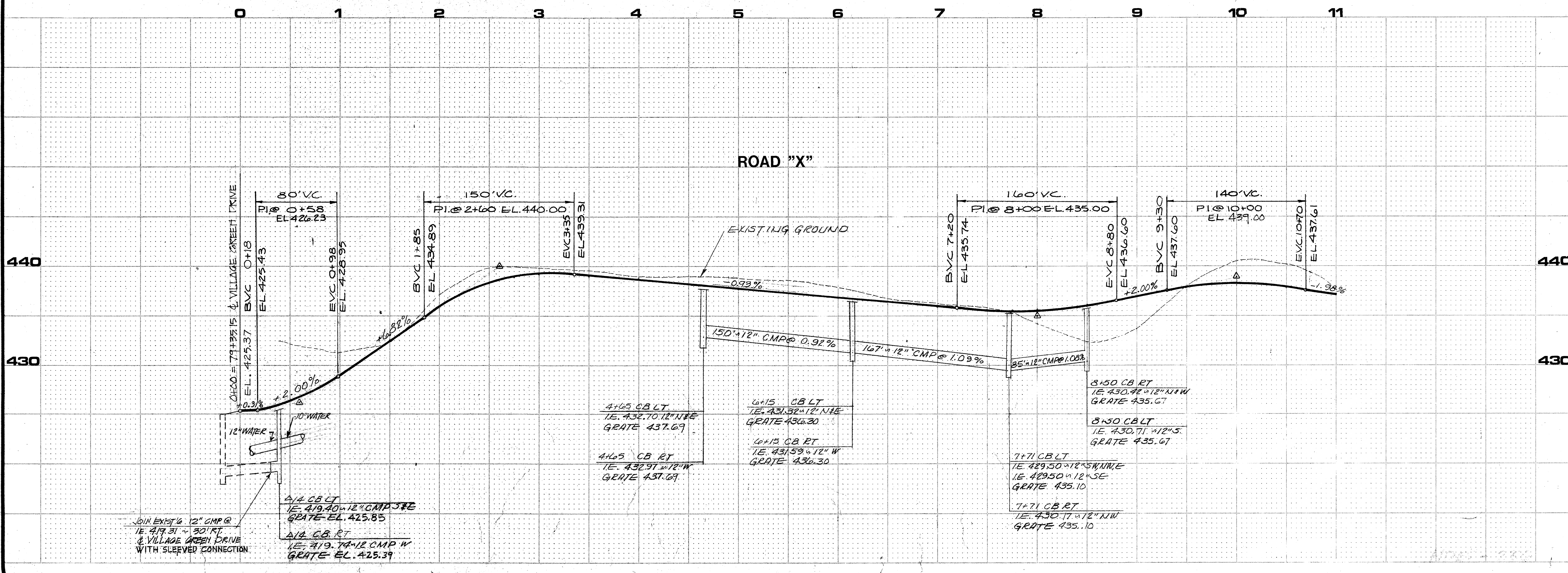
9' x 12' CMP @ 1.00% JOIN EXIST' 12' @
1E. 419.31 - 30' RT. OF VILLAGE GREEN DR.
WITH SLEEVED CONNECTION.

CURVE DATA:
R = 720.00'
Δ = 03° 07' 00"
L = 39.16'
T = 19.59'

SEE SHT 2
NOTE: FOR PROFILE
INFORMATION
LINES C, D, F SEE SHT 8

approval
FOR CONSTRUCTION:
David E. Wood
David E. Wood, P.E.
SNOHOMISH COUNTY
ENGINEER

W & H WILSEY & HAM, INC.
ENGINEERING • PLANNING • SURVEYING
• ENVIRONMENTAL ANALYSIS •
631 Strander Boulevard
Tukwila, Washington 98188
Telephone
(206) 248-2170



JOIN EXIST' 12' CMP @
1E. 419.31 - 30' RT.
& VILLAGE GREEN DRIVE
WITH SLEEVED CONNECTION

4 1/4" CB LT
1E. 419.40 - 12" CMP SEE
GRATE EL. 425.85
4 1/4" CB RT
1E. 419.74 - 12" CMP W
GRATE EL. 425.39

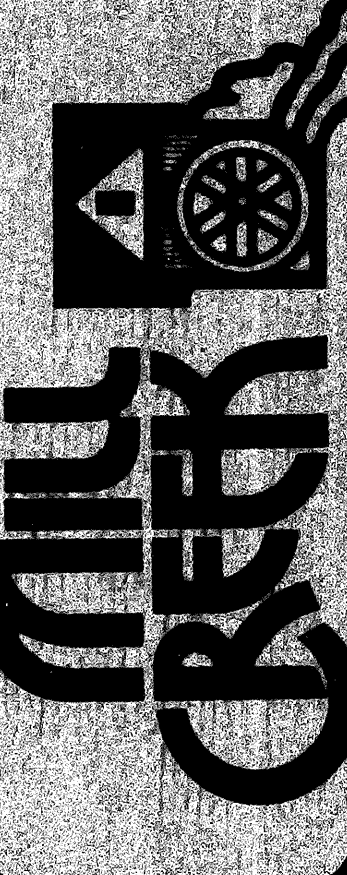
4 1/4" CB LT
1E. 432.70 - 12" NW
GRATE 437.69
4 1/4" CB RT
1E. 432.97 - 12" W
GRATE 437.69

6 1/4" CB LT
1E. 431.32 - 12" NW
GRATE 436.30
6 1/4" CB RT
1E. 431.59 - 12" W
GRATE 436.30

8 1/4" CB RT
1E. 430.44 - 12" NW
GRATE 435.67
8 1/4" CB LT
1E. 430.71 - 12" S
GRATE 435.67

7 1/4" CB LT
1E. 429.50 - 12" SW NW
1E. 429.50 - 12" SE
GRATE 435.10
7 1/4" CB RT
1E. 430.17 - 12" NW
GRATE 435.10

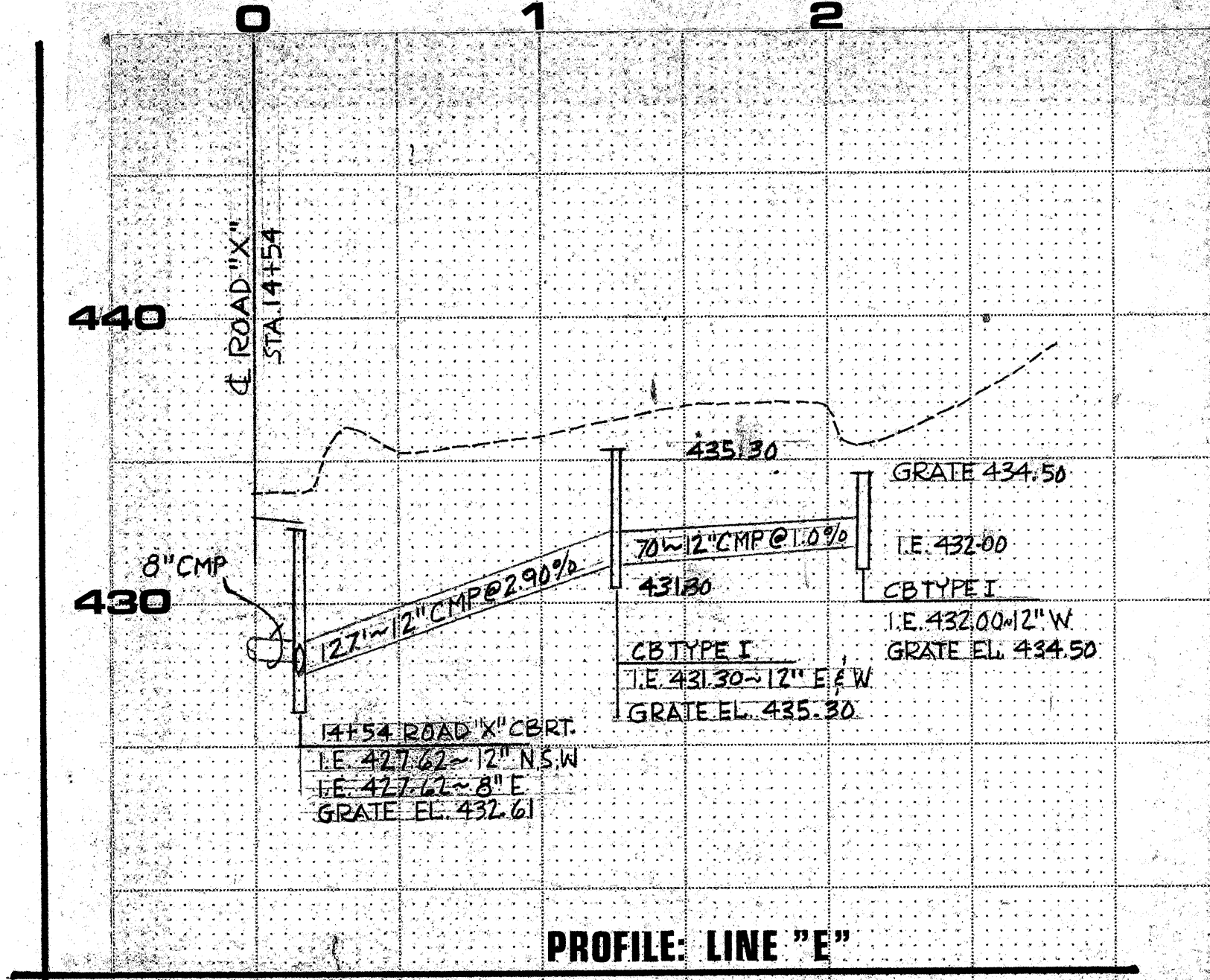
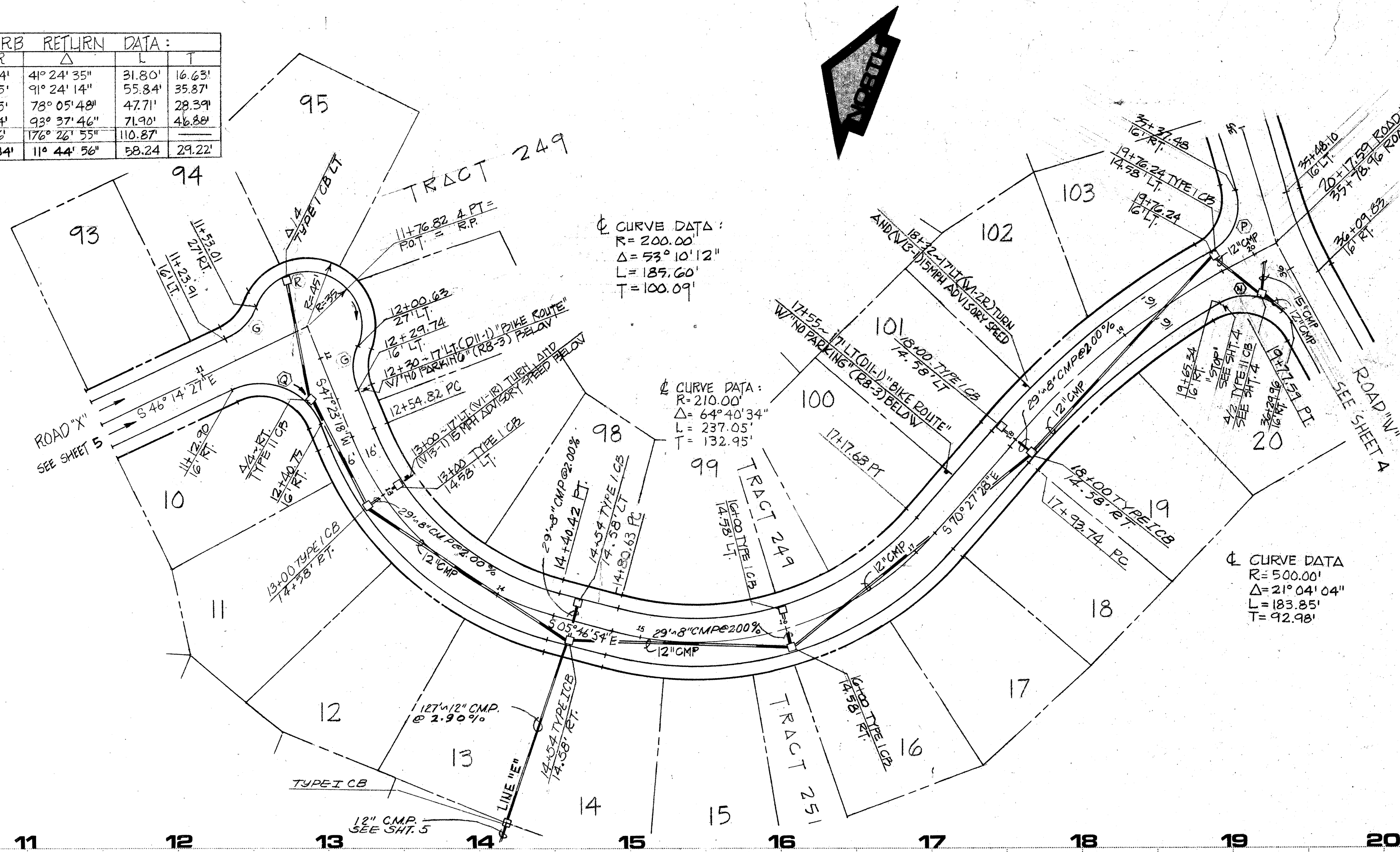
ROAD "X"
sta. 0+00 to 10+25.32



Revisions
By Date
Date 10.77
Scale 1" = 50' H / 1" = 5' V
Designed LEW/DHE
Drawn RLL/SRM
Checked DHE
Approved
Dwg Number
2.2020.4001-21.D1
SHEET

HUCKLEBERRY

CURB RETURN DATA:				
R	Δ	L	T	
44'	41° 24' 35"	31.80'	16.63'	
35'	91° 24' 14"	55.84'	35.87'	
35'	78° 05' 48"	47.71'	28.39'	
44'	93° 37' 46"	71.90'	46.88'	
36'	176° 26' 55"	110.87'		
284'	11° 44' 56"	58.24'	29.22'	



approval
FOR CONSTRUCTION

David E. Wood
David E. Wood, P.E.
INCORPORATED COUNTY ENGINEER

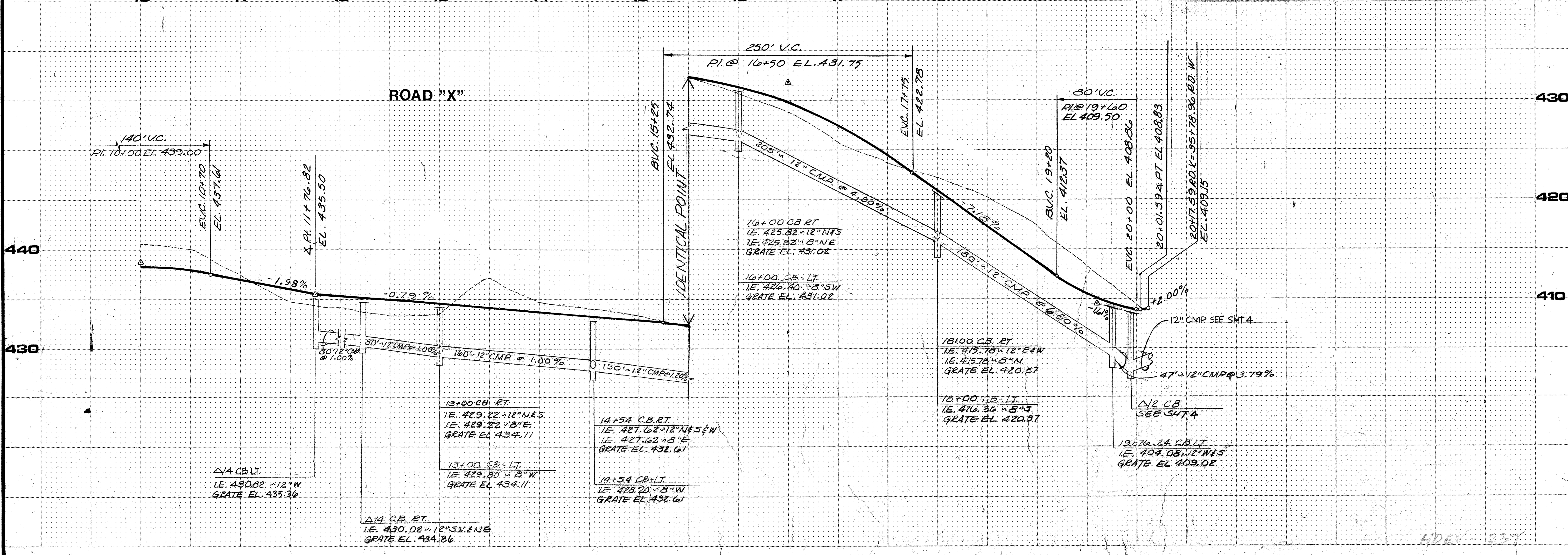
W & H WILSEY & HAM, INC.
ENGINEERING • PLANNING • SURVEYING
• ENVIRONMENTAL ANALYSIS •

631 Strander Boulevard
Tukwila, Washington 98188

Telephone
(206) 248-2470

ROAD "X"
sta. 10+25.32 to 20+17.89

MILY CREEK



Revisions

By _____ Date _____

Date: 10-77
Scale: 1"=50'H/W=1"=1'V
Designed: LEW/DHB
Drawn: RLL/SRM
Checked: DHB
Approved: _____

Dwg. Number: 3-2090-4001-21-D1
SHEET: 6 of 9

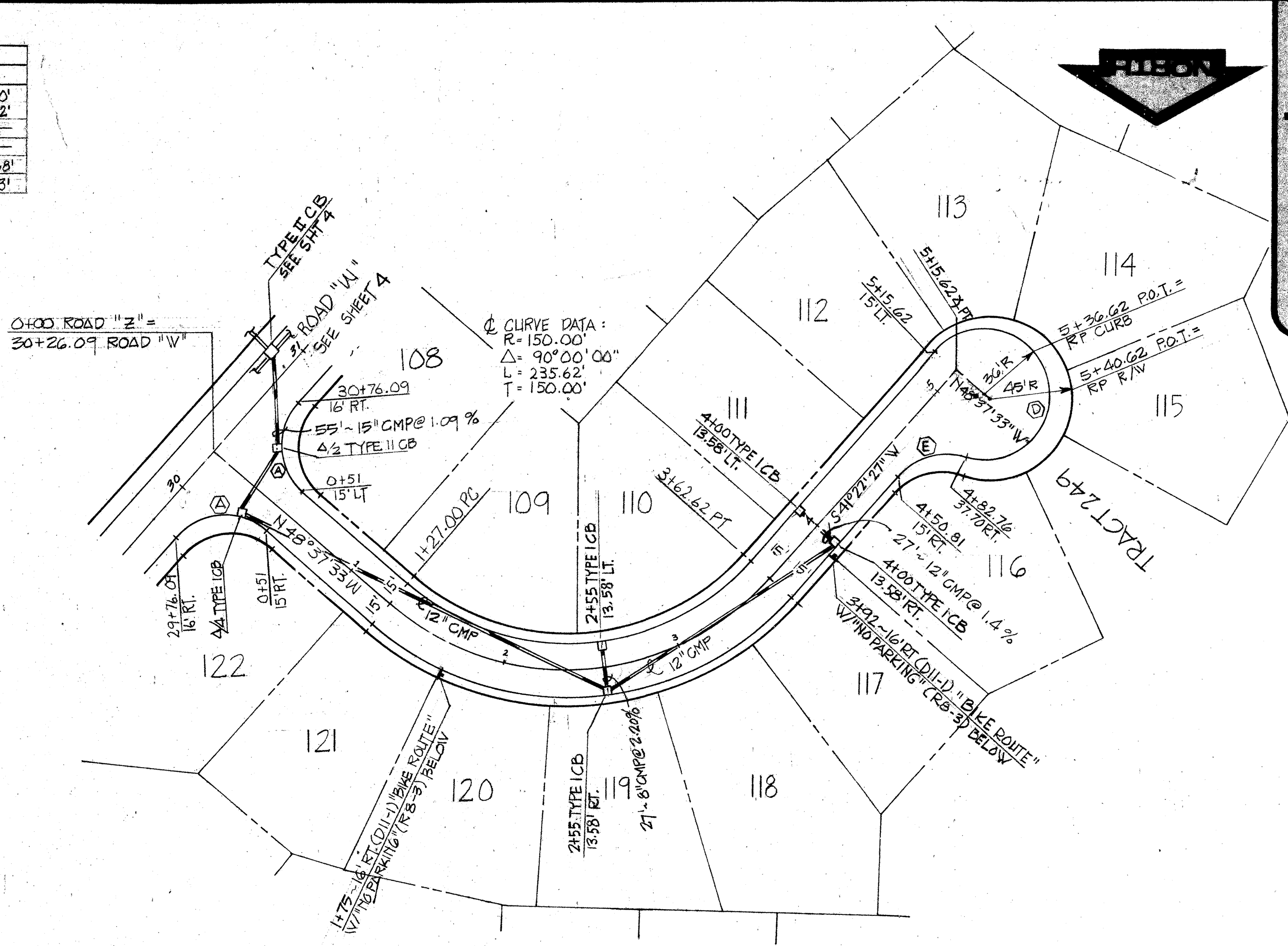
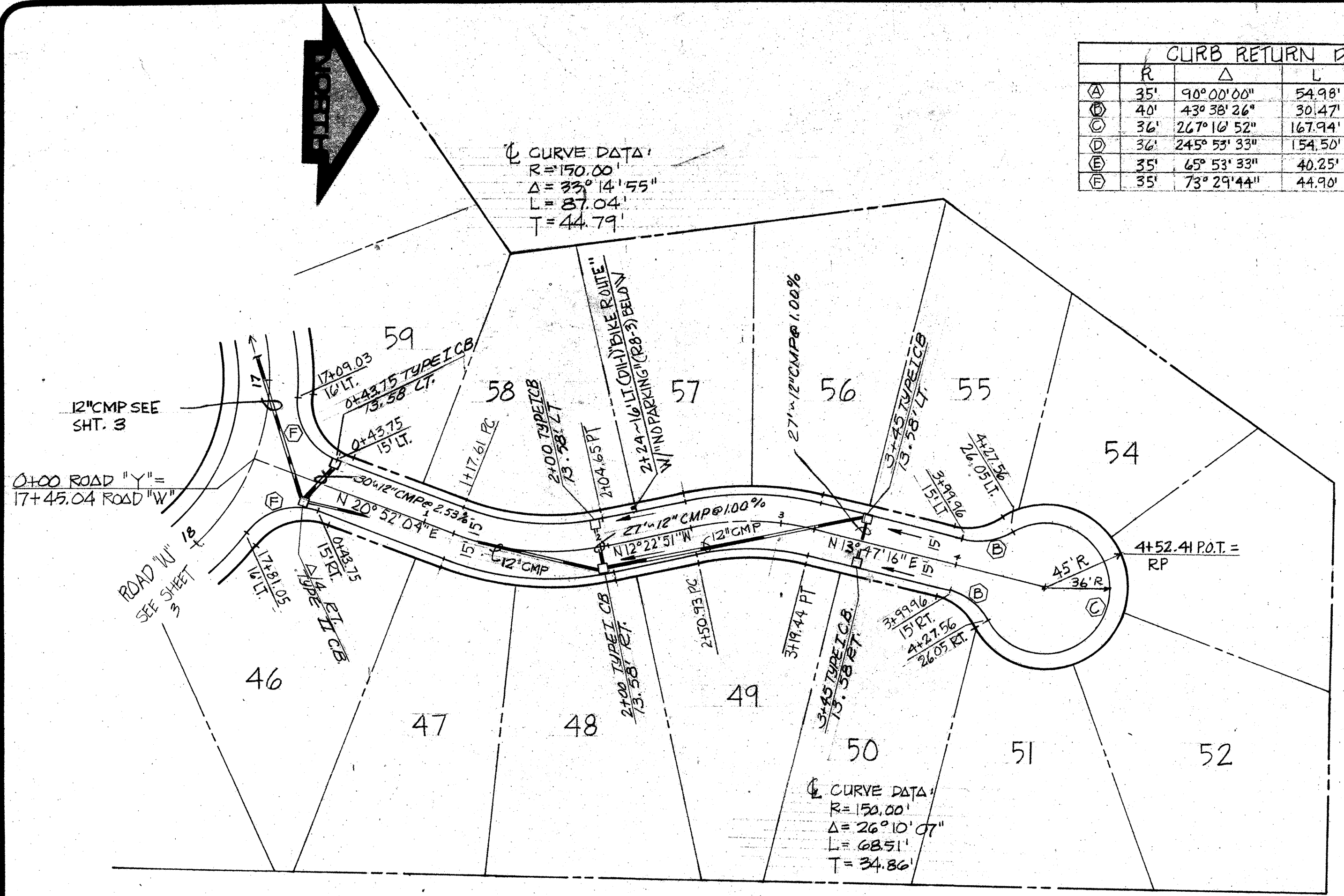
HUCKLE BERRY

CURB RETURN DATA:				
A	R	Δ	L	T
①	35'	90°00'00"	54.98'	35.00'
②	40'	43°38'26"	30.47'	16.02'
③	36'	267°10'52"	167.94'	—
④	36'	245°53'33"	154.50'	—
⑤	35'	65°53'33"	40.25'	22.68'
⑥	35'	73°29'44"	44.90'	26.13'

CURVE DATA:
 R=150.00'
 Δ=33°14'55"
 L=87.04'
 T=44.79'

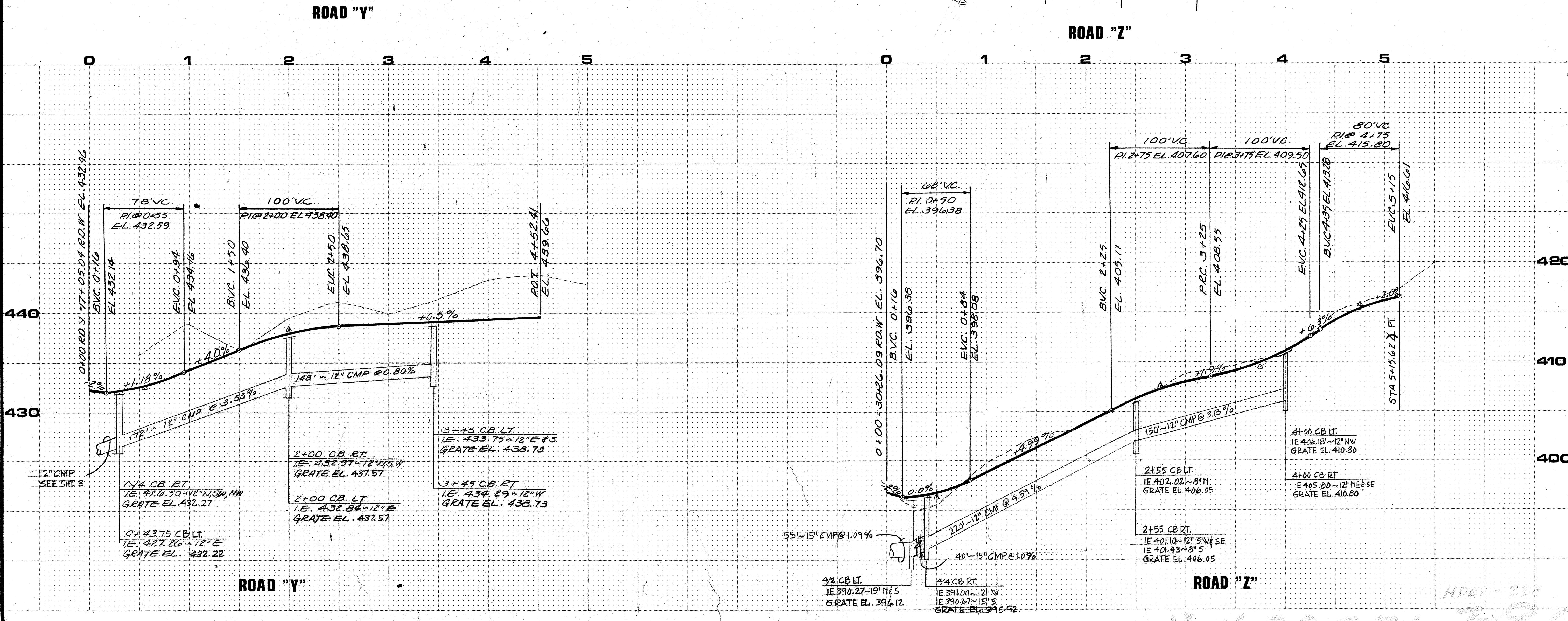
CURVE DATA:
 R=150.00'
 Δ=26°10'07"
 L=68.51'
 T=34.86'

CURVE DATA:
 R=150.00'
 Δ=90°00'00"
 L=235.62'
 T=150.00'



approval
 FOR CONSTRUCTION:
Harold S. ...
 Gerald E. Wood, P.E.
 BIRD-HOVISH COUNTY
 ENGINEER

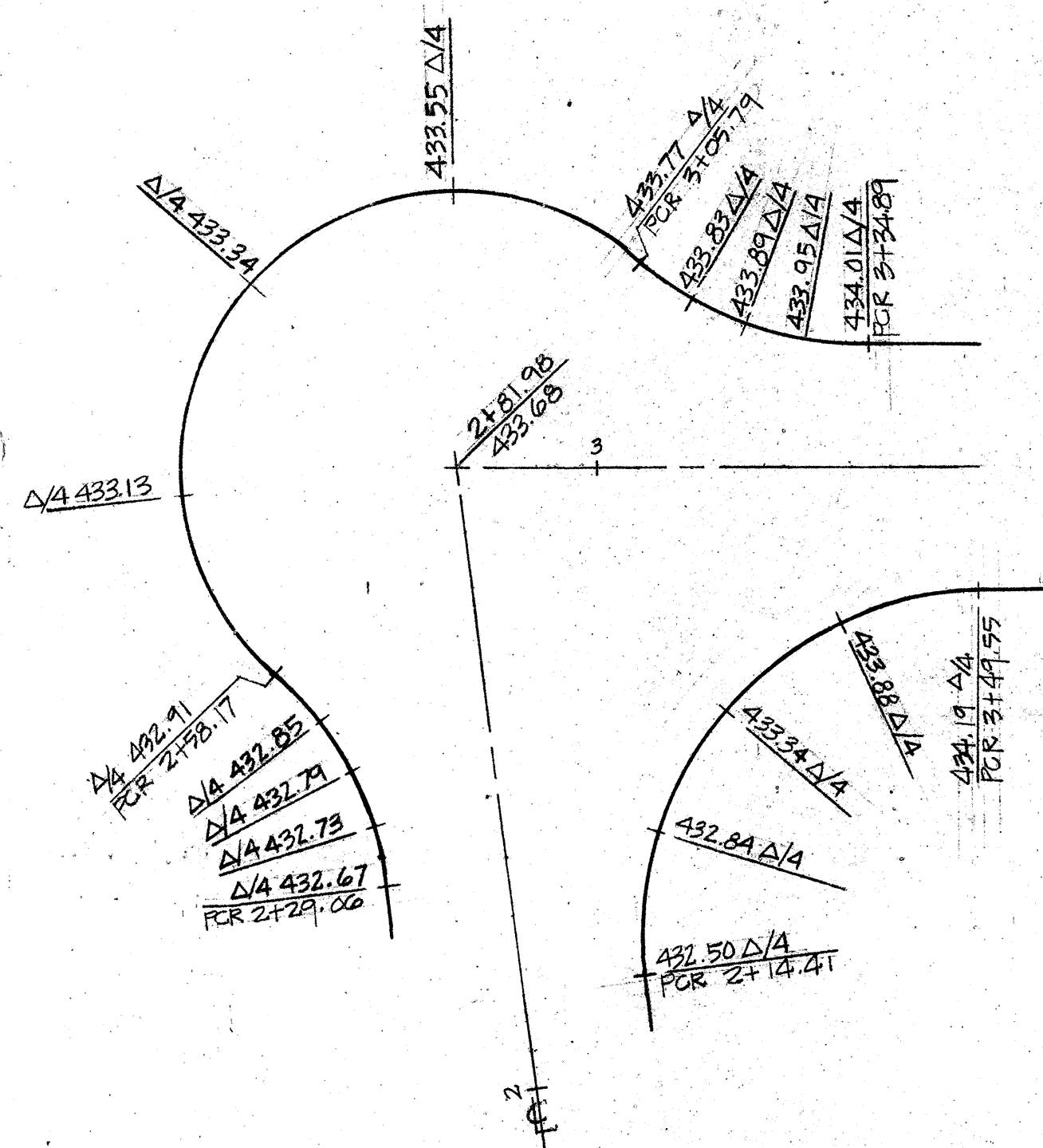
WH & WILSEY & HAM, INC.
 ENGINEERING • PLANNING • SURVEYING
 • ENVIRONMENTAL ANALYSIS •
 Telephone (206) 248-2470
 631 Strander Boulevard
 Tukwila, Washington 98188



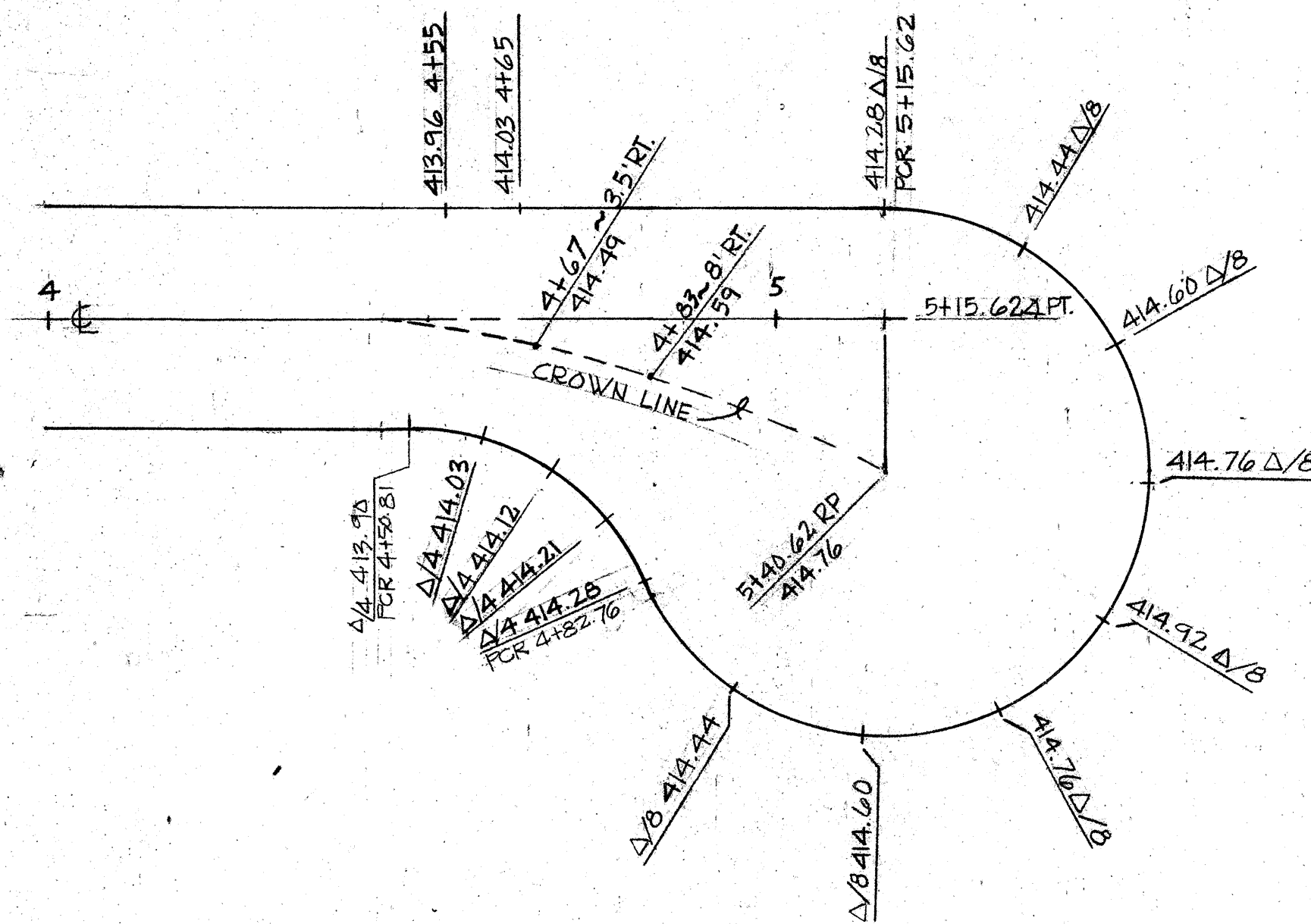
ROAD "Y"
 sta 0+00 to 4+52.41
 ROAD "Z"
 sta 0+00 to 5+40.52



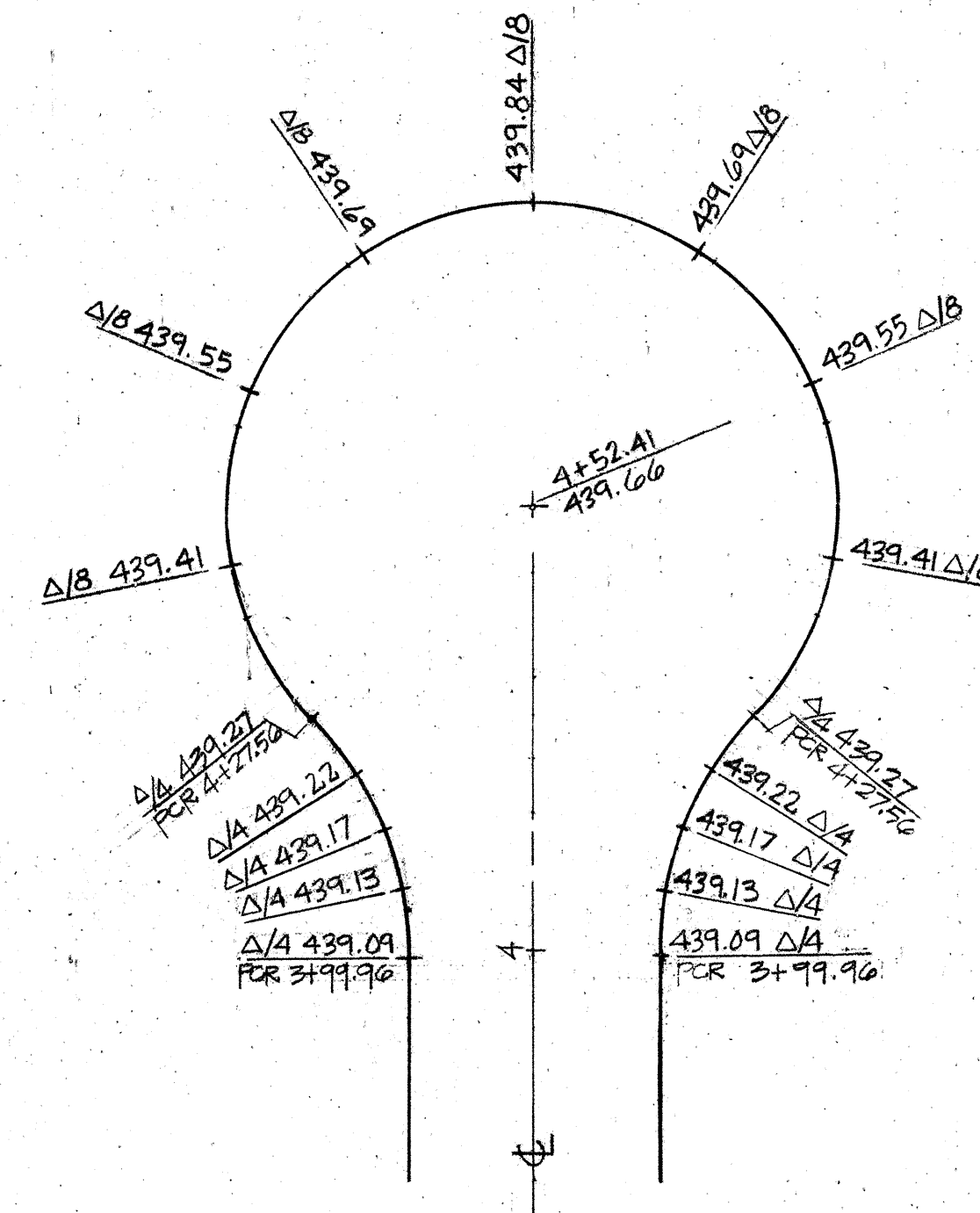
Revisions:
 By: _____ Date: _____
 Date: 10-77
 Scale: 1"=50'H / 1"=5'V
 Designed: LEW/DHP
 Drawn: RLL/SRM
 Checked: DHP
 Approved: _____
 Dwg Number: 3-2090-4001-21-D1
 SHEET



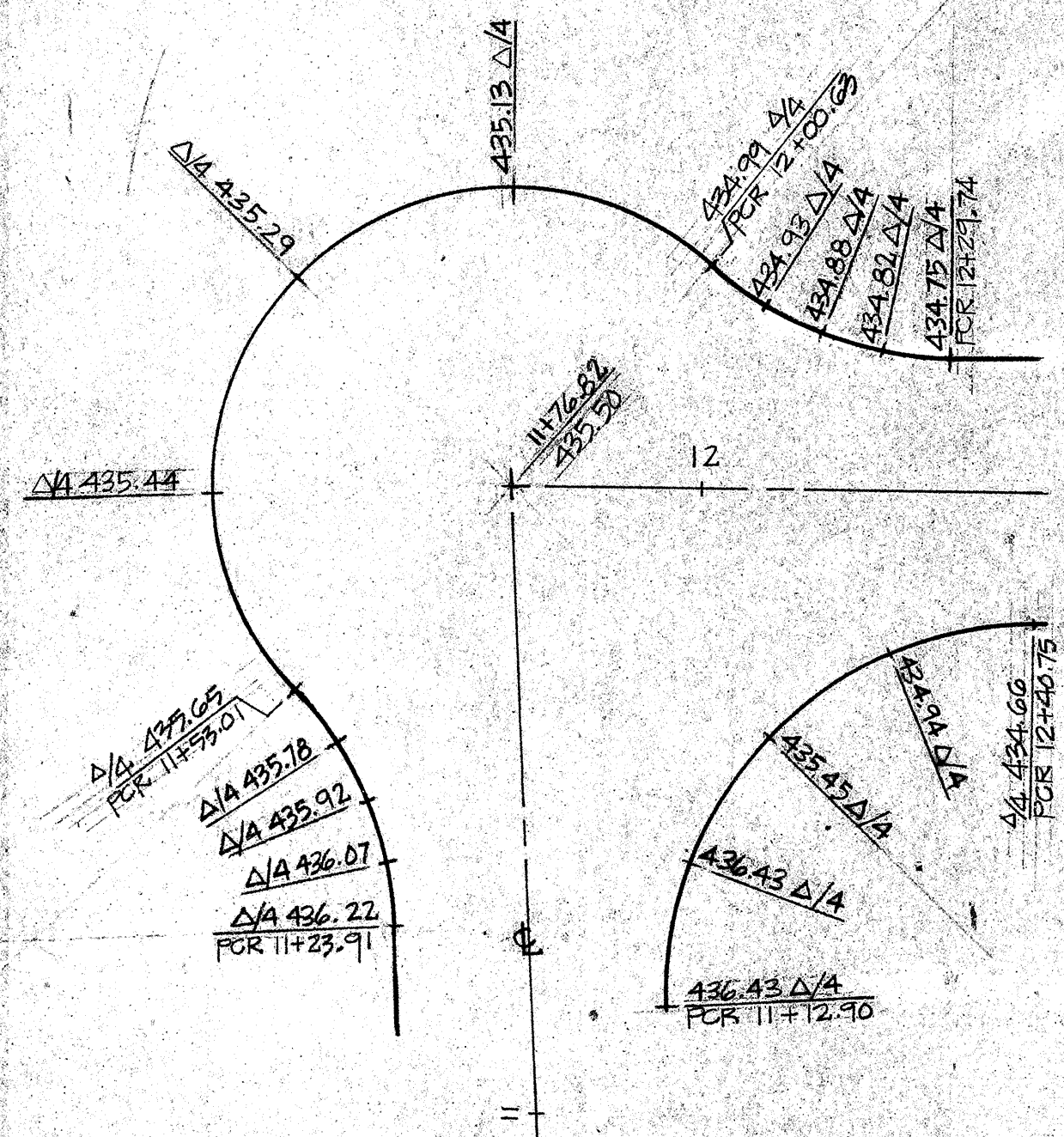
ROAD "W" CUL-DE-SAC
(SCALE: 1" = 20')



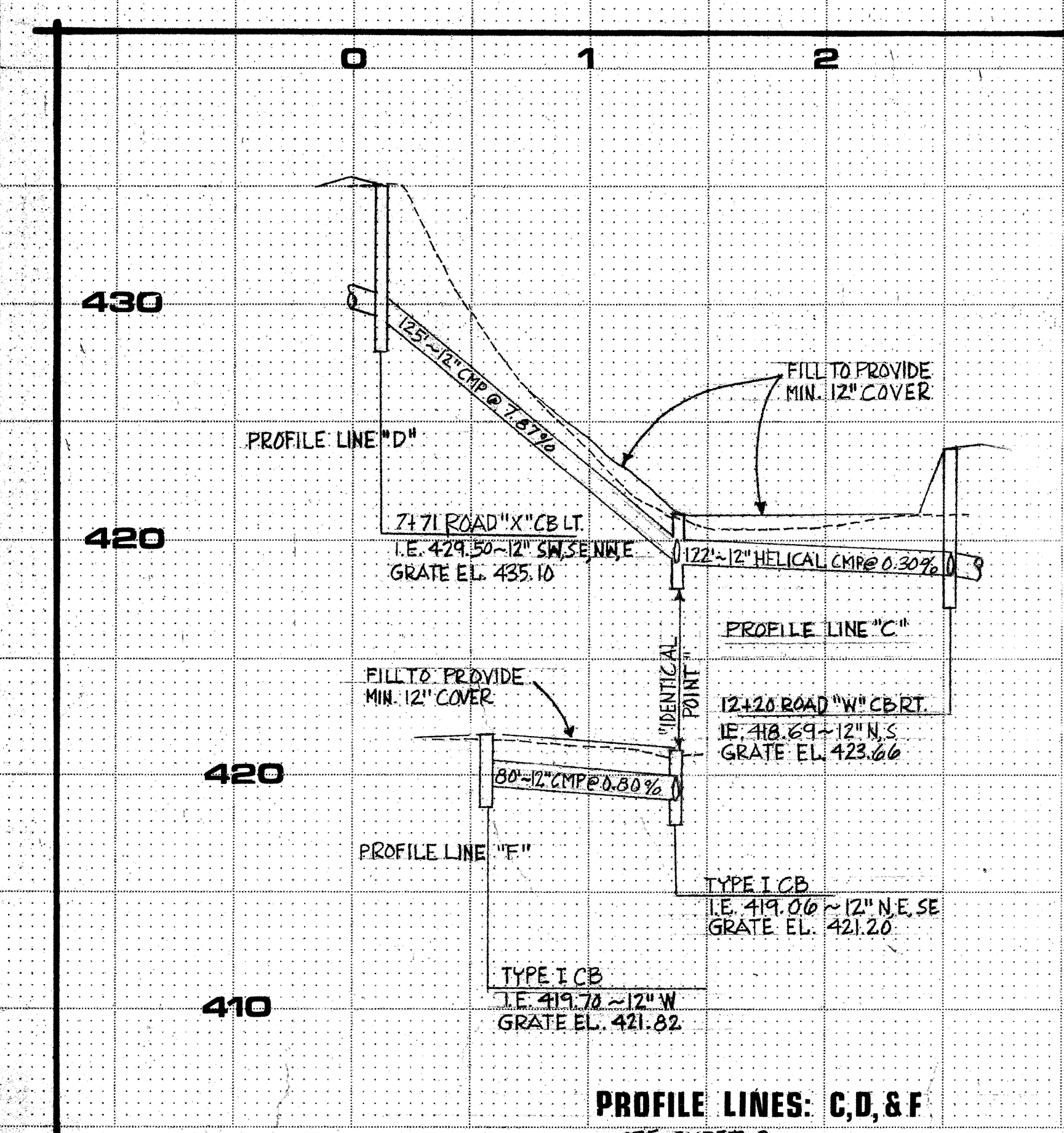
ROAD "Z" CUL-DE-SAC
(SCALE: 1" = 20')



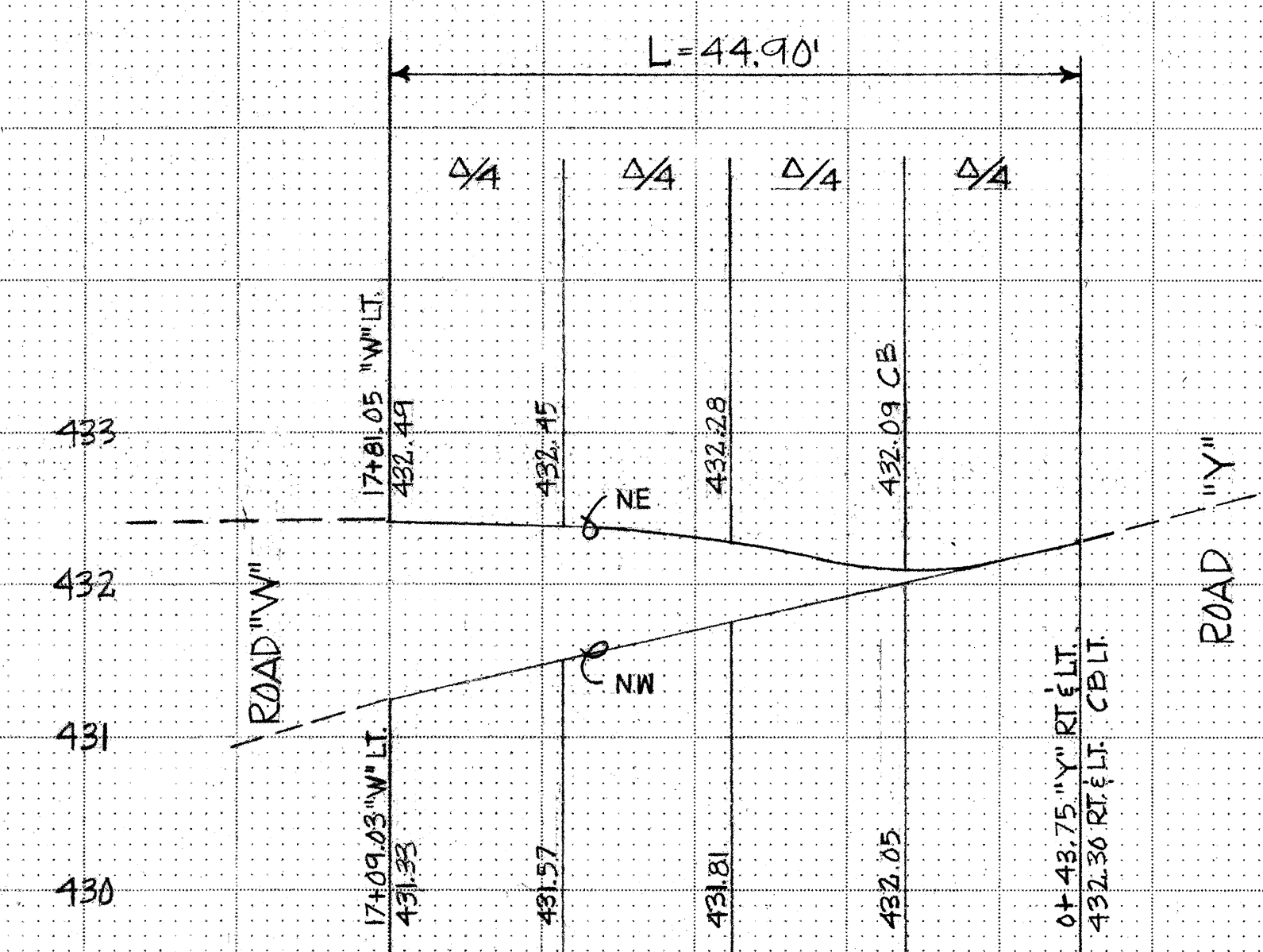
ROAD "Y" CUL-DE-SAC
(SCALE: 1" = 20')



ROAD "X" CUL-DE-SAC
(SCALE: 1" = 20')



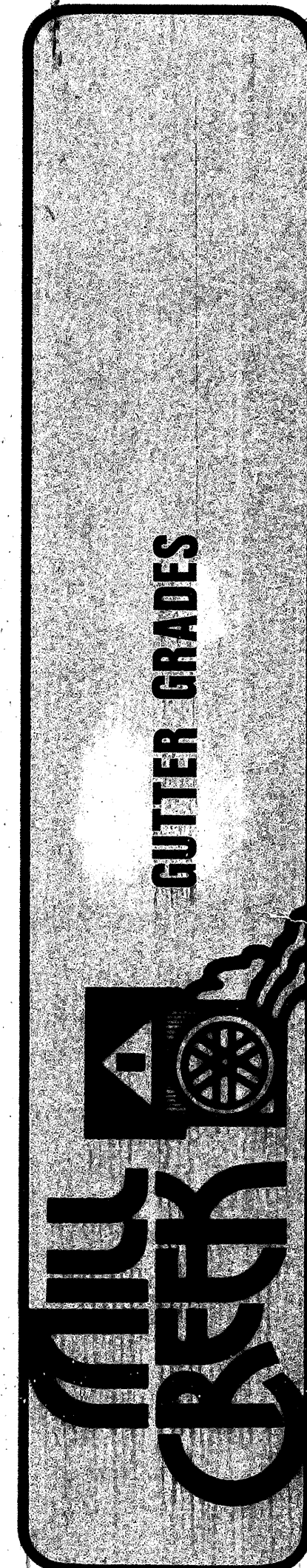
PROFILE LINES: C, D, & F
SEE SHEET 2
(SCALE: 1" = 50'H / 1" = 5V)



ROAD "W" @ "Y"
SEE SHEET 7
(SCALE: V: 1" = 1'
H: 1" = 10')

approval
FOR CONSTRUCTION:
David E. Wood
David E. Wood, P.E.
ENGINEER
BNO-HOMISH COUNTY

WH & H WILSEY & HAM, INC.
ENGINEERING • PLANNING • SURVEYING
• ENVIRONMENTAL ANALYSIS •
631 Strander Boulevard
Tukwila, Washington 98188
Telephone
(206) 248-2470



Revisions

By Date

Date: OCT 77
Scale: AS SHOWN
Designed: LEW/DHE
Drawn: ELL
Checked: DHE
Approved:

Dwg. Number
3-2090-4001-21
SHEET
8 of 9

HUCKLEBERRY

